

Colonial Woodcutter

March, 2017

President's Angle Will Hottle



<i>President's Angle</i>	1
<i>Experienced Sawdust</i>	2-6
<i>Guild Interest</i>	7-18
<i>Show & Tell</i>	19-22
<i>More Guild Interest</i>	23-27
<i>Mentor List</i>	28
<i>Wisdom & Wit</i>	29-30
<i>Sponsors</i>	31
<i>Contacts</i>	32

The next regular AWG Guild meeting will be March 9, 2017 at 7PM at:

Davidsonville United Methodist Church
819 Rt. 214
Davidsonville, MD

The next AWG Board meeting will be March 23, 2017 at 7PM at:

Champion Realty
711 Bestgate Rd
Annapolis, Md

More info on page 32.

March is going to be a very busy month for the Guild.

1. Educational Opportunities:

On March 9 Steve Latta will be our speaker at the General Membership meeting, followed by his lecture/demo on March 10 to forty lottery-selected members, and his two-day hands on classes on March 11 and 12.

2-Community Non-Profit Projects:

—Go Green Event

Our Promotional Table setup for this annual event is Saturday, March 25, at the Davidsonville Elementary School.

--Native Bee Nesting Boxes

The National Wildlife Refuge hopes to give away 100 boxes during the Refuge's Birthday Bash on March 18. Bring your box kits on March 9.

3 Fun and Educational Event:

P.A.T.I.N.A. Show- Potomac Antique Tools and Industries Association Show and Auction on Saturday, March 11. See page 8.

4

We are in the process of amending the Bylaws regarding membership. In the February newsletter the proposed changes to the Bylaws were published under the heading Important Reading. Please review the proposed changes and be prepared to vote on them at the March 9 meeting. These changes will greatly simplify the dues system and make the Membership Chairman's job much less complicated.

EXPERIENCED SAWDUST WITH Ron Northcutt

By Andy Borland



Q. TELL US ABOUT YOURSELF: HOMETOWN, BACKGROUND, EDUCATION, PROFESSION, AND OTHER INTERESTS.

In this highly transitive area, I am one of those rare creatures that was actually born in the District of Columbia and have lived in Maryland most of my life. I attended schools in Montgomery County – graduating from Albert Einstein High school, and then Montgomery Junior College in Takoma Park for a 2-year program in electrical technology. I then moved to Columbus, Ohio for 2 years and got married. We came back to Maryland, and I started at University of Maryland University College where I eventually graduated with a BS in business management and later an MBA.

I worked at Westinghouse/Northrop Grumman for 37 years, all of which was in Quality. I met a lot of great people (including a number of Guild members), learned a lot, had some fun, and I think I made some good contributions. In 2010, I took a buyout and have been working at consulting jobs implementing SAP systems since then.

In addition to woodworking, I have interests in ballroom dancing and Painting Bob Ross style oil painting.

Q. WHAT WOODWORKING PUBLICATIONS DO YOU READ AND WHICH ONE DO YOU REFER TO MOST OFTEN?

I have gotten a number of different magazines over the years, but now I get Fine Woodworking and Woodcraft magazines.

Q. HOW LONG HAVE YOU BEEN INTERESTED IN WOODWORKING?

In the mid 70's we were in an apartment and needed a dining room table. I got the hankering to make one, so I got some pine 1x4's and made the legs and apron. I used T&G oak flooring for the top. Most of the work was done on the balcony of our apartment. We used the table for a number of years.

After moving to our first house and watching the New Yankee Workshop with Norm Abram, I became intrigued by how he was able to effortlessly produce a product in 30 minutes. OK, I really knew it took longer – but I was hooked anyway. I bought a Craftsman contractor table saw and set that up in the basement and started making sawdust. The first thing I made was a workbench right from one of Norm's books. I then made some I book cases.

At some point, I bought a used Shopsmith with a band saw, jointer, scroll saw, and sander. Taking classes at the Shopsmith store that used to be in Chantilly, and made several projects: a wall-hung cabinet, a walnut & cherry bowl, a chip tray, rolling pin, and a drop-leaf table.

Attending a weeklong conference in 1991 hosted by a new organization called Woodworker's Association of North America (WANA), I made an oak mirror frame with a shelf and learned about marquetry. Later I made several pieces from kits I bought from Constantines (www.constantines.com). While WANA had some good beginnings, they did not survive and are now defunct.

Q. WHAT OR WHO HAS INFLUNCED YOUR WOODWORKING INTEREST?

Probably Norm Abram from the New Yankee Workshop on PBS has had the greatest influence. I started out watching the show, then I bought his books and used those to build a number of projects. Of course, I did not have all the equipment Norm did, which caused me to have to be creative at times. But that stretched the gray cells and it was good.

Q. WHAT ARE YOUR FAVORITE WOODWORKING PROJECTS?

One of my favorite projects is the coffee cart I designed and built for Cedar Ridge Community Church in the early 90's. The Church did not have a permanent home and they met at Capitol College in Laurel. They served coffee Sunday mornings and needed something to hold the pots, coffee, cords, etc. So I designed and built a rolling cabinet out of birch. It had 2 sets of doors. On one side, it had three drawers that could hold nine 3 lb. coffee cans each. On the other side the pots, cords, etc., could be stored.



I also built a cherry dining room table for some friends. It was 9.5' by 53" with 3 leaves that came out and could be stored in the table. It seated 14 people around it.





I built a cedar-lined blanket chest from poplar and then worked with a church member and his daughter to build two more from cherry: one for his wife and one for the daughter. It was fun showing them how to do that and then having them do the work.

Q. DESCRIBE YOUR WORKSHOP: LOCATION, SIZE, POWER TOOLS, IMPORTANT HAND TOOLS, JIGS COMMONLY USED AND IS THERE ANYTHING UNUSUAL ABOUT YOUR SHOP?

We moved to Upper Marlboro in March of 1997 and the property had a 3 BR house and a separate 32x32 garage. The former owner restored cars and used the garage just as a dry place to store them. I built my woodshop in the 32x32 building – putting in a 100 amp line, insulation, ceiling and new lights. I now have a chop saw, a Craftsman cabinet saw, drill press, Shopsmith, planer, router table (with top made at a George Swisher class) and a variety of hand tools. One of these days I will build the tool cabinet to hang on the wall and possibly the machining island.

Q. HAVE YOU RECEIVED AWARDS OR RECOGNITIONS FOR ANY OF YOUR WOODWORKING PROJECTS? IF SO WHAT WERE THEY FOR AND BY WHOM?

No awards. Only the oohs and aahs from the recipients.

Q. TELL US WHAT YOU HAVE GOTTEN OUT OF BEING A MEMBER OF THE GUILD.

There have been several categories:

Knowledge:

I have been a member for over 10 years. There have been a number of presentations that were of interest. Some artists presented topics showing their furniture creations integrating their own style with their philosophy like Vicco von Voss, others showing non-traditional roles - such as the long bow maker who shared the history of the long bow, how arrows were made as well as how to make the long bow. Certainly, Don Williams presented us with his vast knowledge on Shellac and had an entertaining presentation. Regardless of the topic, I always found something to take away whether it was the way the presenter organized their thoughts and presentation materials, the subject itself, or a topic that was referenced in the presentation.

Exposure to a variety of options in wood:

The presentations offer an opportunity to peek into the presenter's world which can be beneficial. I liked the recent presentation with the company that made slab tables and needed a source for the slabs. They started the "urban logging" business to get wood, and to keep the logs from the landfills. An example of "Necessity is the mother of invention."

Classes:

I have taken several classes with Guild members: Jim Luck's class on inlay; George Swisher's class on making a router table top; Don Williams' shellac class. Although not sponsored by the Guild, I also took the band saw box class at Troy's. There were Guild members in that as well.

Having a source of expertise:

I have asked several Guild members for advice on different topics. They have always been willing to share what they knew and it has been appreciated.

Guild Interests

Upcoming Events



P.A.T.I.N.A. Show

Potomac Antique Tools & Industries Association, Saturday, March 11. See patina-tools.org for more information



Carroll Carvers Annual Festival of Carving

Saturday, April 15

300 S. Center Street, Westminster, MD 21151

Robert Motion Circle

Contact Pete Turner at

papasary@comcast.net for more information.

Go Green Event

"Please bring in an item to donate for the Promotional table. Scroll saw items, bowls, boxes, carvings, intarsia, marquetry, anything except toys - I have plenty of those. These items will stay with the Promo table and will be returned as we get more items, so make sure your name is on it somewhere if you want it back. You can bring them to the membership meetings in February and March. Table set up is at the Go Green Event at the Davidsonville Elementary School on **Saturday, March 25th**. Please make arrangements with Vicki Kunde to deliver your items to her house if you cannot make the membership meetings. Thank you very much.

Need a Weekend away?
Try The Center for Art in Wood
141 N. 3rd Street
Philadelphia, Pa 19106
centerforartinwood.org

Submitted by Walton Rogers



David Knopp, 2015, Baltic Birch Plywood, 32 X 60 X 36

January 19, 2017

Dear Mr. Borland & the Annapolis Wood Workers Guild,

Happy New Year! Please find enclosed cards of gratitude from our students in Pre-K, as well as our students who are participants in the Services from the Heart Weekend Backpack program. Please accept my apology for getting these communications to you after the holidays. Things get quite hectic at that time of the year as I'm sure you can imagine. We truly appreciate the beautiful toys and jewelry boxes that were made for our students. The children were so thankful to receive them and our Pre-Kindergarten students actively use the handcrafted toys and baby cradles in the classrooms. Thank you for thinking of our students and graciously being willing to share your talents with others! We wish you all an abundance of blessings in 2017.

Sincerely,

Kecia Johnson

Mrs. Kecia Johnson
School Counselor



New Member

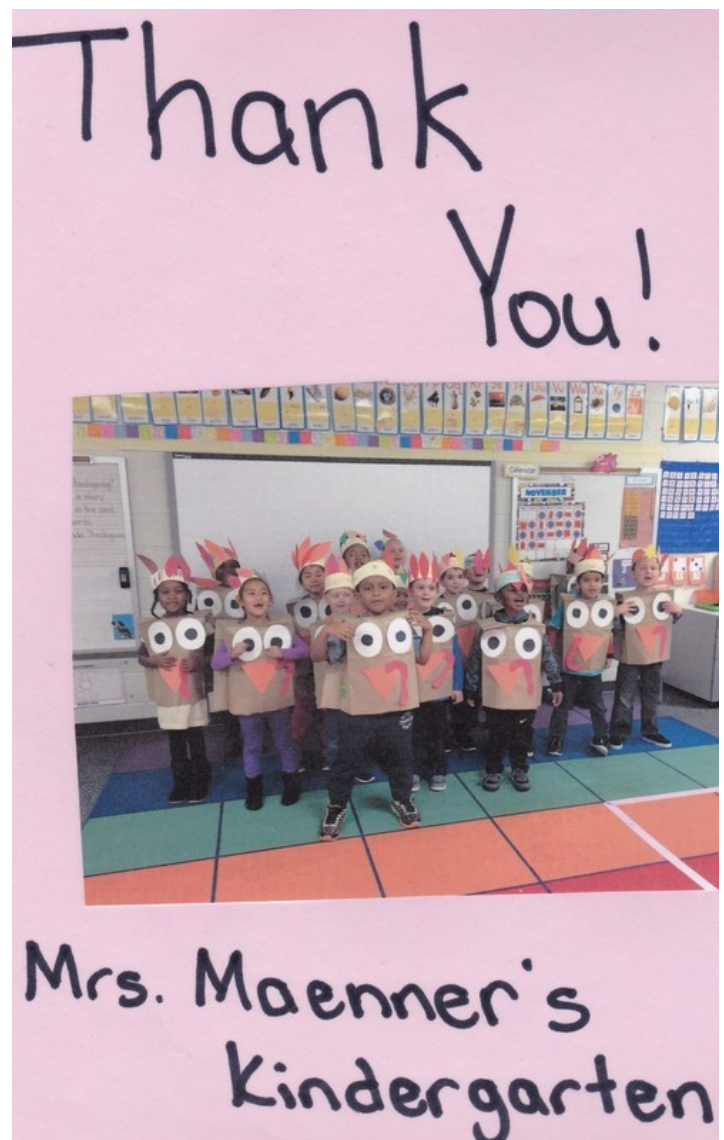
LARRY CHESSON

Larry was born in Baltimore and raised in Anne Arundel county. He and his wife, Josephine, live in Pasadena, Md. They have two daughters. Larry was an electrician for the Anne Arundel County School System. He received his education in electricity at the ABC trade school. His hobbies, besides woodworking, are crabbing, golf, and fishing. When he does have time to be in the shop, he builds furniture and considers himself an advanced woodworker. He spends time in his 24 X 16 foot shop. When asked how big his shop was, he answered "never big enough". Welcome to the Guild, Larry.

Steve Latta is Coming to Town

Yes, it is the Steve Latta who is Associate Editor of Fine Woodworking and in recent years has published articles on Evaluating Wood Joinery of the past, it's failures and how to avoid them. reclaiming vintage cabinet glass and making it usable for new projects, and Designing and Building a Bench-Top Bench to bring small work details closer to a good working height and securing them properly. This last will be the topic of the two-day hands-on seminar on March 11 and 12, 2017 for which a dozen AWG members will get the opportunity to attend, as well as the previous day, the 10th, on which 40 will participate in a lecture/demo all at Troy Beall's Annapolis Woodworks Facility. Many of you have already signed up for the lottery to be selected for either/both sessions. Cost for the single day, March 10th, will be \$10.00 and the two-day hands-on will be \$20.00 and must be paid in advance to confirm your attendance.

Good luck all!! Pat





Scenes from the January Woodworking show in Baltimore.





Why we do it.



Photos by Candee Van Iderstine.

Drawings

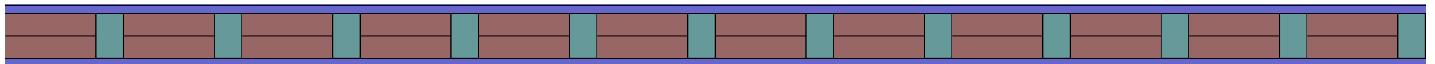
Hi, I'm Paul Dodson. I've recently taken over as your drawing coordinator from Don Ames. We currently have 4 types of drawings. All drawings are for members only. Each one is explained below:

Main Drawing: Held each month. Tickets are \$1.00. This raffle includes at most 3 items: \$50 Lowes card and at most 2 others items. These 2 items are normally donated by members. Items donated will be held by the raffle chairperson for the next raffle period. All items valued at \$99 or less.

Nick Carlucci Donation: Held each month until depleted. \$100 gift card from Lee Valley. Tickets are FREE to active members.

Education Fund Drawing: Held twice a year in June and December. Tickets are FREE to active members. \$500 value used toward woodworking class.

Big Drawing: Held April, August and December. Item determined by the AWG board. Items valued at \$100 or more. At Board Meeting 2 months prior to the drawing, the board will assist in the selection of item.

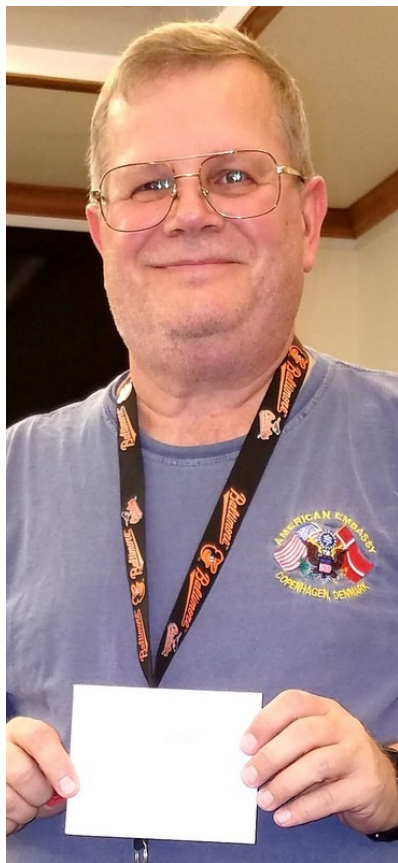



We're
Searching for
Volunteers

Contact Dave Tate or Pat Applegate to find out what vacancies need to be filled.

RAFFLE

January

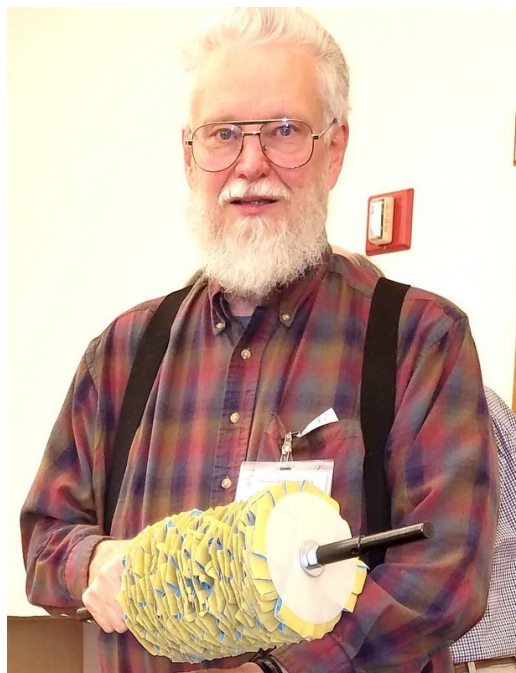


Tim Roman wins a Lee Valley gift card.

Not sure what Will Hottle won.



Bob Franz was a double winner with the Lowe's gift card and a sander.



Lloyd Gleason goes home with a sanding mop

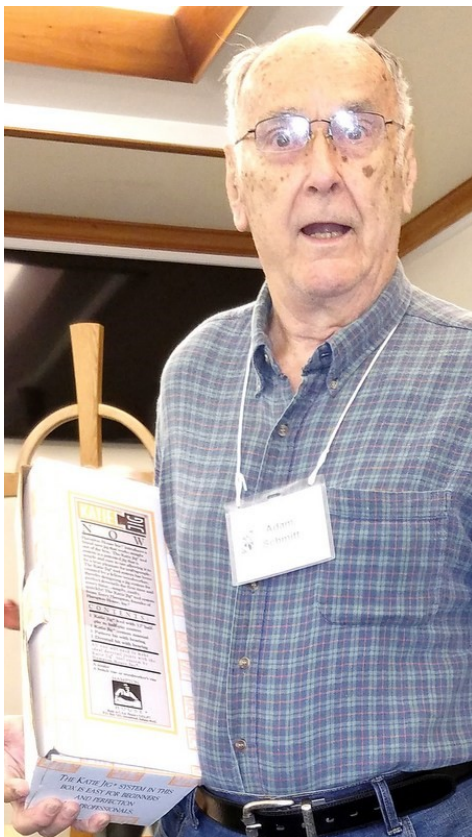
February's Raffle Winners



Karl Hoke wins the \$100.00 Lee Valley gift card.



Tom Dettweiler wins a splitter for his table saw.



Adam Schmitt wins a Katie Jig system.



Virgil Ramey wins the \$50.00 Lowe's gift card.

FEBRUARY'S SPEAKER



Don Nalezty demonstrates and shows his many carved objects.



MARCH'S SPEAKER

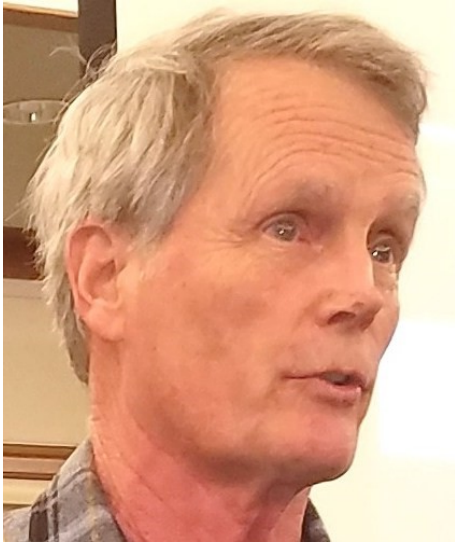
Steve Latta, Associate Editor of Fine Woodworking, will begin his weekend here discussing any number of things that will be sure to interest one and all.

APRIL'S SPEAKER

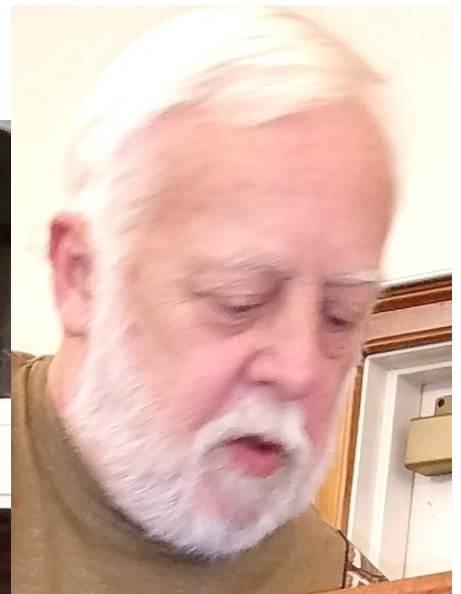
Bill Hardy. For more photos of his work see his website: turnstylesonline.com



SHOW & TELL



Rick Hodgdon displays a few of his labels.



Chris McDonald shows his stunning jewelry box.

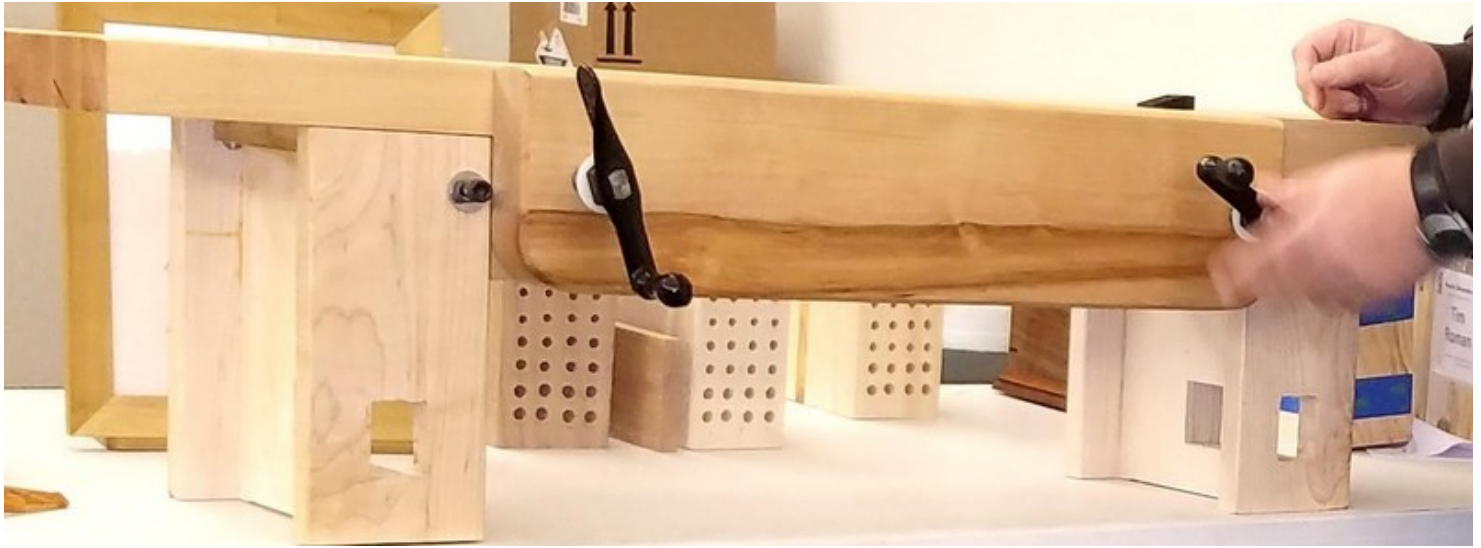


Jack Hirrlinger with a puzzle.

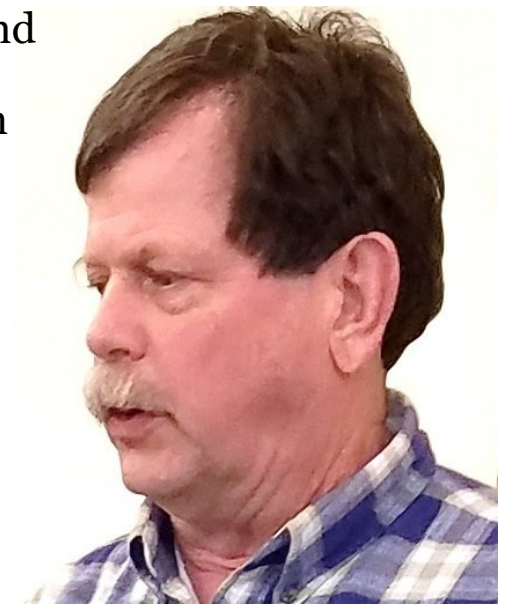
Dear Mr. Borland & the Annapolis
Wood Workers Guild,

Thank you for thinking
of us! Thank you for
creating such beautiful gifts
(tops and jewelry boxes) with
your hands! We love
everything!! We hope you all
have a blessed holiday season!!

Love,
Weekend Backpack
program participants
& School Counselor, Mrs. Johnson



Tim Roman, left, and
Bill Schneck each
made a small bench
to sit upon their
large bench.

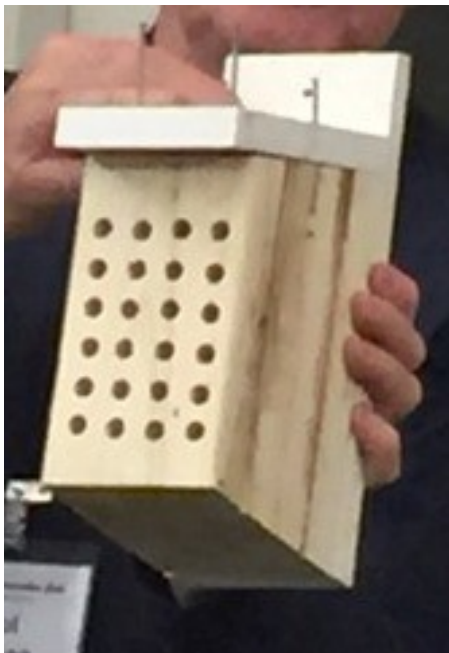




Sue Springett and a photo of her trash drawer.

I found great prices for WWW.gliderite.com Glide rite slides. They are side mounts in various sizes for 100 lb weight and free delivery in three days from the company. Better than the liberty slides in the big box stores at 50 lbs.

Great site for how-to-shop videos: www.ibuildit.ca and www.ibuildit.ca [utube](https://www.youtube.com/) Fun videos , great projects.



Paul Hansen holds his bee box, which will attract native bees.



Important Reading

Annapolis Woodworkers Guild

Proposed Bylaws change for 2017:

ARTICLE III. MEMBERSHIP AND DUES

Section 1. remains unchanged

Section 2. *current*- Membership dues are assessed annually and payable to the Treasurer on the membership renewal/anniversary date of becoming a member, and allow the member to attend a full year of meeting and events.

Section 2. *proposed*- Membership dues are assessed annually and payable to the Treasurer during January of each calendar year and allow the member to attend a full year of meeting and events.

Section 3. *current*- A member will be dropped from the roster if the dues are not paid within 60 days of the member's renewal/anniversary date.

Section 3. *proposed*- A member will be dropped from the roster if the dues are not paid within two calendar months of the month due.

Section 4. *current section 4 will be renamed Section 5. and a new Section 4 added*

Section 4. *proposed*- New members added during the course of the calendar year will be assessed dues that are a pro-rata portion of the remainder of the full calendar year during the month joined. The calculation will use the numerical value of the number of months remaining in the year divided by 12 (the # of months in a year) multiplied by the current annual dues assessment and that value will be rounded to the nearest full dollar. Example: A member joining in May(5th month of the year) would pay 7/12ths of the current annual dues assessment rounded up or down as appropriate.

Section 5. *current*- The dues assessment shall be set annually by the Executive Board at the April Board Meeting. Any change in the amount of dues shall take effect on the member's renewal/anniversary date.

Section 5. *proposed*- The dues assessment shall be set annually by the Executive Board at the April Board Meeting. Any change in the amount of dues shall take effect on the next January renewal date.

HAVE YOU CLEANED YOUR SHOP LATELY ?

WELL I HAVE!

With a lot of help. Some of you have seen my shop and know it was filthy. Dust is your enemy and it gets in and on everything. Enclosed are pictures of my shop cleaned up and at least one picture with men who helped me. Without Bill Phebus, Bill Carbin and Phil Carroll and Don Ames the cleaning of my shop would not have been possible. If you have not cleaned your shop NOW IS THE TIME TO DO IT.

By Andy Borland



Even More Important Reading

Classes at The School of Annapolis Woodworks

Troy Beall is offering the following classes to our AWG Members for 2017. These classes are offered **only to** AWG members and are not in his published school woodworking schedule for 2017.

The AWG Board has **approved a \$100 tuition subsidy** for each member taking a class. Each class will be offered on both a weekday and weekend. Depending upon your response, a final decision will be made as to the date and or holding any of the classes.

If you are not planning on attending the general meeting on 9 February, please send Jim Francis (jfrancissail@yahoo.com) an e-mail to reserve a slot.

All classes need a minimum of 5 students.

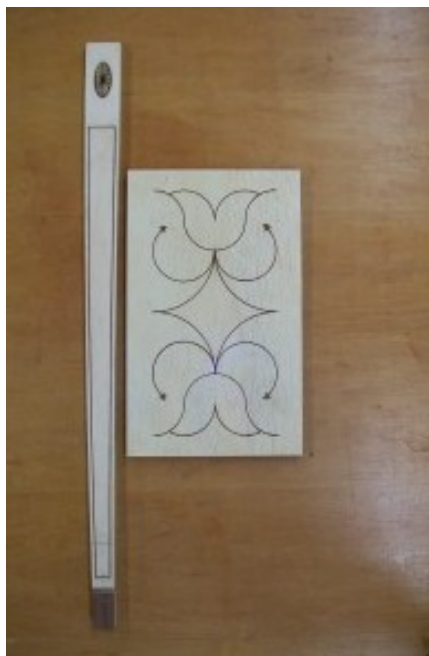
Hand Plane



Course Description: Students will learn how to make a wooden plane. A handmade wooden plane is light, responsive and capable of the finest smoothing and shaping. In this two-day class, students will employ basic woodworking skills to transform a block of hardwood into a sensitive and lasting tool. As the planes are completed, students will learn or refine sharpening and planing techniques. They

will also become more knowledgeable about a plane's mechanics in general, enabling them to troubleshoot and tune up any plane. Each woodworker is issued his/her own tools used during the class. Wood, glue, sandpaper and finishes are all included in the materials fee.

Tuition: \$250.00 + Materials fee \$60.00 Held August 24 and 25 or September 23 and 24



Inlays

Course Description: With this class under your belt, you will be able to start enhancing all of your furniture pieces. Why? It

usually will bring up to 30% more value to your

piece.

FULL

For centu-

ries, crafts-

men have been using

inlays in their furni-

ture...from the Federal period to

contemporary design. The vine and

berry inlay was brought into the country by the

Tuition: \$ 250.00 + \$30.00 materials fee. Held March 30 and 31 or June 8 and 9

18th Century Mirror



Course Description: This Chip-mirror uses a wide range from hand to pow-

Each stu-
will

pendale
of tools

er.

dent

make

DROPPED

their

very own

18th Century Mir-

ror in their choice of

wood. We recommend buying

maple, walnut, mahogany, or pine

(if painted). We will send out a cut sheet

upon registration along with recommenda-
tions of local wood suppliers offering dis-

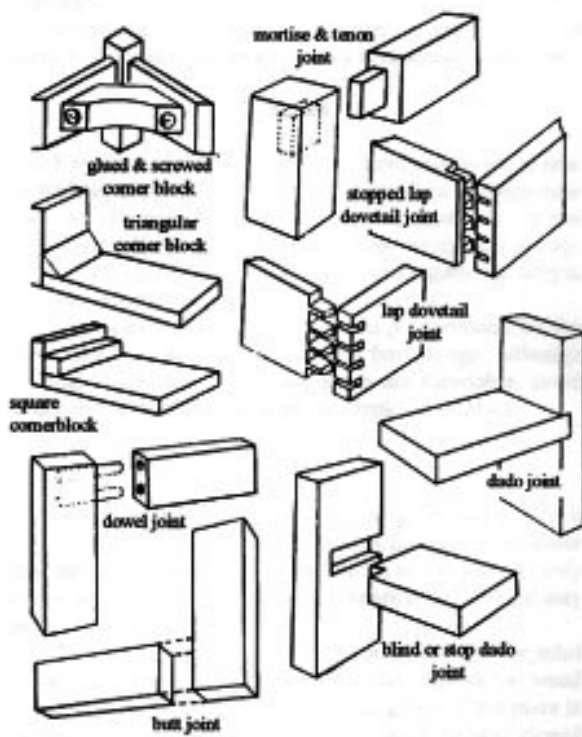
Tuition: \$250.00 Held August 24 and 25 or September 23 and 24



Scroll and Ribbon Tray

Course Description: This two-day introductory class focuses on basic carving skill as students make a carved scroll and ribbon tray to take home. These delightful trays trace back to the 1800's, and were used to carry tea and other refreshments into the parlor. Wood, glue, and sandpaper are included in the materials fee.

Tuition: \$250.00 + \$20.00 materials fee. Held July 20 and 21 or July 29 and 30



Joinery

Course Description: This weekend workshop will focus on basic joint-making skills. Students will learn how to cut dovetails, mortise and tenons, lap joints, dados and rabbets. This is a great class to take to learn the basics of cabi-

FULL

Tuition: \$250.00 + \$30.00 materials fee. Held May 4 and 5 or July 22 and 23

Mentor List

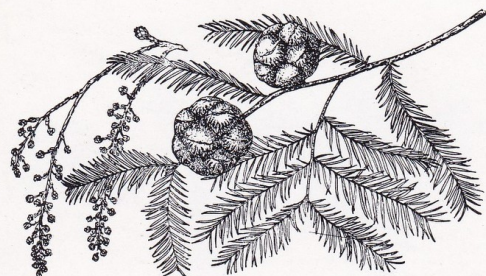


Last Name	First Name	Phone	E-mail	Mentor Subject
Ames	Don	410-268-0509	dfames@verizon.net	Use and maintenance of Edge Tools (planes, chisels, scrapers)
Applegate	Patrick	410-426-8287	pappleg@jhmi.edu	Finishing with Shellac (brushed and padded)
Arndt	Michael	410-551-8588	MarylandWood-Pro@gmail.com	General wood finishing and finish restoration/repair
Ashby	Bob	410-969-2910	toolsrus58@comcast.net	Shapers, router tables and tooling for same
Borland	Andy	410-647-1242	AHBorland@aol.com	Box making
Chavez	Harry	410-863-5940	harry.chavez@gmail.com	Intarsia
Dodson	Paul	410-760-5382	pdwood-crafts@verizon.net	Scroll saws and scrolling
Hirrlinger	Jack	410-798-1339	tjhirr@verizon.net	Toys, tricks and puzzles
Luck	Jim	410-647-6622	jfl639@verizon.net	Inlay and shaker boxes
McDonald	Chris	410-326-1685	cmcdonald@thewavaz.com	Cabinets

Wisdom, Wit & Whatnot



Cypress, Yellow
(*Taxodium distichum*)



While Cypress is still prevalent throughout the South distinction should be made between the type now available and what was known as “Tidewater Red Cypress”, which is now virtually extinct. Current Cypress has less heartwood and more sap-

Source:

Architectural Woodwork Inst.
46179 Westlake Dr., Suite 120
Potomac Falls, VA 20165
571-323-3636 awinet.org

xylography

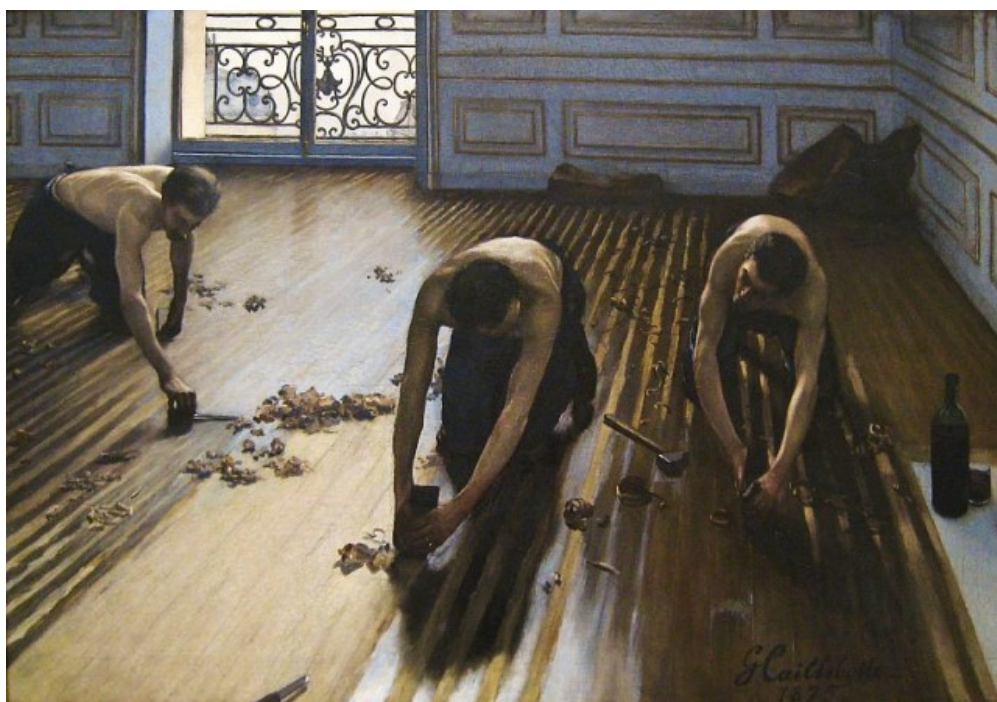
Zye-LAH-grun-fee



Current evidence dates the word *xylography* to 1816, but it is linked to printing practices that are much older. In fact, the oldest known printed works (from Japan and China in the 8th and 9th centuries) were made by xylography, a printing technique that involves carving text in relief upon a wooden block, which is then inked and applied to paper. This method of wood-block printing appeared in Europe in the 14th century. These days, *xylography* can also describe the technique of engraving wood for purely artistic purposes. English speakers picked up the word from French, where it was formed as a combination of *xyl-*, meaning "wood," and *-graphie*, which denotes writing in a specified manner.

The Floor Scrapers

Gustave Caillebottle
1875



Support Our Sponsors

Wurth Wood Group 6660 Santa Barbara Rd. Elkridge, MD 21075 800-935-6229	Hartville Tools Hartville, OH 44623 Hartvilletool.com 800-345-2396	Exotic Lumber Co. 1610 Whitehall Rd. Annapolis, MD 21409 410-349-1705
--	---	--

World of Hardwoods 809 Barkwood Ct. Suite #1 Linthicum, MD 21090 410-636-3991	Brusso Hardware LLC 67-69 Greylock Ave Belleville, NJ 07109 Brusso.com 1-212-337-8510	Klingspor 2555 Tate Blvd. S.E. Hickory, NC 28603 Klingspor.com 800-645-5555
--	--	--

**Somerset Door &
Column Company**
174 Sagamore St.
Somerset, PA 15501
Doorandcolumn.com
800-242-7916

American Woodcrafters Supply
212 East Main, Box G
Riceville, IA 50466
Americanwoodcrafterssupply.com
1-800-995-4032

OFFICERS

The Executive Officers for May, 2016- May, 2017 are:

President - Will Hottle <president@annapoliswoodworkers.org>

1st Vice President - Dave Tate <vp1@annapoliswoodworkers.org>

2nd Vice President - Bill Carbin <vp2@annapoliswoodworkers.org>

Secretary - Phil Carroll <secretary@annapoliswoodworkers.org>

Treasurer - Karl Hoke <treasurer@annapoliswoodworkers.org>

Membership Chairman - Claire Cole <memchair@annapoliswoodworkers.org>

Program Chairman - Richard Hodgdon <progchair@annapoliswoodworkers.org>

The other officers are:

- Newsletter Editor - Ritch Valentich <news@annapoliswoodworkers.org>
- Education Chairmen - Pat Applegate & Mike Arndt
<educhair@annapoliswoodworkers.org>
- Librarian - Lloyd Gleason <libr@annapoliswoodworkers.org>
- Endowment Coordinator - Mike Arndt
- Entertainment Coordinator - Paul Dodson
- Show Coordinator- Vicki Kunde
- Show & Tell Coordinator - Jack Hirrlinger
- Special Projects Coordinator - Harlan Ray
- Tour Coordinator - Harlan Ray
- Charity Coordinator - Andy Borland
- Historian - Jim Francis
- Webmaster - Dave Tate

General Membership Meetings:

2nd Thursday of each month 7 PM

Davidsonville United Methodist Church

#819, Route 214, Davidsonville, MD

Address correspondence to:

Annapolis Woodworkers Guild

P.O. Box 6001

Annapolis, MD 21401

Website:

Annapoliswoodworkers.org

Executive Board Meetings:

4th Thursday of each month 7PM

Champion Realty

711 Bestgate Road

Annapolis, MD

Parking at rear of building. Use elevator to access lower level. Doors are open from 6:30 to 7:00. If arriving after 7:00 you will need to call Will on 410-562-3605 or another meeting attendee.

Annual Membership Dues: \$35.00,
due on the anniversary of the date you
joined AWG.