

Colonial Woodcutter

Annapolis Woodworkers Guild

August 2021

Annual Tool Sale and Swap Aug 12th at 7:00 pm

AWG President's Message



Greetings Guild Members:

The August meeting marks the first time in nearly sixteen months the Guild will meet in person—outside on the parking lot of the Davidsonville United Methodist Church for our annual tool sale and swap. Gather up and dust off those tools you no longer need and earn a little extra cash for those new tool purchases. We'll begin around 7:00 pm and should last for about one hour. No other Guild business will be conducted, but a sign-up sheet for members attending the September Anniversary picnic will be available. See the flyer in the August newsletter for more information.

As noted above, we have begun to plan for the 30th + 1 Annapolis Woodworkers Guild Anniversary picnic at Kinder Farm Park. We'll move our Thursday, September 9, 2021 meeting to Saturday, September 11, 2021 to accommodate the event. For more information, read on in the newsletter.

We are still undecided about meeting in person for the October meeting. We'll wait until we get closer to the meeting date and evaluate the changing pandemic conditions. I hope, however, you take the opportunity over the next two meetings to attend our schedule outdoor events and reconnect with members.

We continue to seek interest members to assume the duties of Newsletter Editor and Woodworking Show coordinator. Please let me know if you can help the Guild fill these positions.

As we continue to move toward rejoining safely in person, I hope everyone remains safe and diligent. The quicker we can overcome this virus, the faster we can return to normal Guild activities.

I hope to see everyone at our annual tool sale. Meanwhile, stay safe and cool.

Bill Schneck

Announcements

August Tool Sale/Swap

Thursday, August 12th

7:00 pm

Can't move around your shop like you used to? There is a solution! Gather up those tools and other PLO (previously loved objects) that you are clearly not using anymore (though spiders may) and bring them to the Annual AWG Tool Sale/Swap. Pass these dearly beloved objects (at least at one point of their existence) on to another member who now clearly NEEDs it!

Where:

The Davidsonville United Methodist Church parking lot (our regular meeting location).

When:

Thursday evening, August 12th, starting about 7:00 pm. Don't be late or you'll surely miss the good stuff!

Announcements

September Activities

30th + 1 Anniversary AWG Picnic

When:

Saturday, September 11, 2021

10:00 AM until Park closes

Location:

Kinder Park Farm

1001 Kinder Park Farm Rd

Millersville, MD 21108

Hot dogs, hamburgers, chips, and bottled water provided. Side dishes and desserts requested but not required

Sawmill mill demonstration, wood working challenges, games and prizes

Ticket to each member for a chance to win a Dewalt trim router

Sign-up at the August tool event or

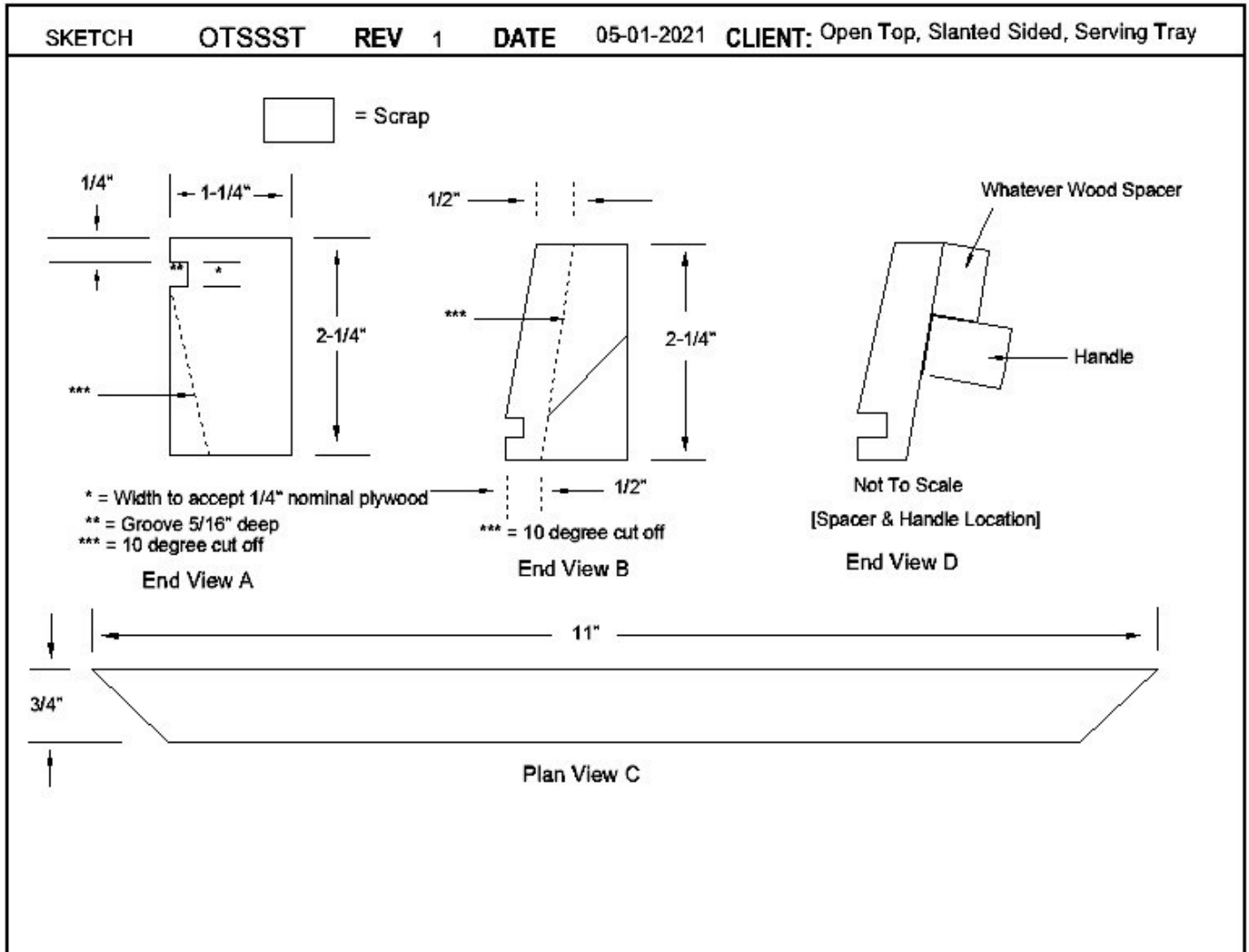
RSVP to annapoliswoodworkers.org website using the “Contact” form with your name and number of people attending by September 6, 2021.

Admission to the park is \$6.00 (Free with Military ID or County park pass)

Annual Dues Payment. Those wishing to pay their annual dues for 2022 early (dues are normally collected in January) should send the amount (\$50.00) to the AWG Treasurer: Vincent Antonioli, 23408 Neck Road, Aquasco, MD 20608. A link also exists to use PayPal to pay. Go to the AWG Web site AnnapolisWoodworkers.org and select the “join” tab for a PayPal link.

Build a Slanted Side Tray

Build your own open top slanted side serving tray - by Bill Carbin



Directions: See next page

Build a Slanted Side Tray

Scope:

Tray 18" [+/- 1/4"] long, 12" [+/-] wide with 10 Degree Slanted 2-1/4" high sides, materiel = clear pine

Material:

Two 12-3/4" ends and two 18-3/4" long, sides, clear [no blemishes] pine 2-1/4" wide 1-1/4" thick pine boards.

Note: A Two boards 36" should be sufficient, however; longer or additional boards may be required to provide clear pine boards. Rough cut is satisfactory.

One 12" wide by 19" long, nominal 1/4" plywood bottom.

Two 12" long by 3/4" wide by 1/2" thick walnut boards (for handles).

Procedure:

- A:** Decide what side of the boards you want to be inside and outside and top and bottom. Mark accordingly!
- B:** Provide a groove in the boards; 1/4" up from the inside bottom, 5/16" deep to fit the thickness of the plywood bottom. Check the FULL LENGTH of the grooves, with a scrap plywood to be used for bottom, to ensure that the width of the grooves suits the plywood and is consistently the proper depth.
- C:** Cut the Two 12-3/4" ends and two 18-3/4" sides with 45 Degree miter as you would a conventional four-sided box.
- D:** Set the saw blade to 10 degrees and not less than 2-1/2 high. Mount the fence on the right side of the saw blade
- E:** **Note** the following is for a left tilt saw blade. The **unfortunate** [with a Saw with a right tilt blade]; procedure will be reversed with the fence on the left side of the saw blade. Again the inside of the side or end, facing the saw blade and the groove away from saw table top.

Now place a cutoff, or one of the ends, between the fence [on the right side of saw blade] and the saw blade, with the groove distant from the saw table and facing the saw blade.

The object is to cut **thin slices**, [at 10 degrees] off the board until the saw blade meets the groove.

Leave the fence at the same setting and cut the other sides the same.

[See sketch number OTSSST END View A]

- F:** Sand the inside of the side boards up to not less than 220 grit.

Suggestion: As it is somewhat difficult to sand the inside bottom to not less than 220 grit. Apply three coats of shellac, sand with 400 grit.

Further suggestion: Time permitting, apply two coats of finish to the top of the bottom and the four insides of the tray, prior to assembling. Sand insides with 400 grit sandpaper

Continued next page

Build a Slanted Side Tray

- G:** Now cut the bottom to fit. Dry assemble the tray making sure the ends are square and the tray is flat.
- H:** Glue up the tray using clamps or straps. Make sure the tray is square and flat.
- I:** After at least 2 hours [preferably over-night], unclamp the tray, set saw blade at 10 degrees, locate fence on right side of saw blade.
- Mark the top tray ½” from the inside.
The object is to cut the slanted sides off the tray sides back to ½” thick.
- Mount the tray on the right side of the saw blade with the top up.
Cut ends first. Gradually cut **very-very thin slices**, [at 10 degrees to table- top] until you reach the ½” thickness mark. Repeat for all sides.
- F:** Sand the outsides and the top of tray up to 320 grit.
- G:** Apply three coats [one coat to the inside bottom and inside sides if pre- finished], to the tray.
- H:** That is all folks!

A Helpful Hint from Rick Hodgdon (your results may differ)



Current Projects

What have you been building in your shop recently? Here is what some of our members have provided to the Guild newsletter:

First up this month is **Andy Borland** who received a call from a gent who found him on our web site. This fellow wanted a serving board ala Martha Stewart 42"x 9-1/2". Here is what Andy produced. The second photo must have been a trial run—just to see if it worked—apparently it did! Wood used is curly maple.



Rick Hodgdon's wife gave him a beautiful Damascus steel chef's knife (this sometimes happens if you complain about the chow). Rick, not knowing what to do with it, except to whittle something, built a really nifty knife holder to keep it secure until he figures out what it is really for.



Current Projects

Andy Borland has made a couple “traveling” chess boards/boxes for his two grandsons who have taken to the game. Squares are 1-1/8” and are made of maple and “poor man’s mahogany”. Each box was constructed of cherry.



Bulletin Board

Sassafras Logs Available.

Contact Rick Hodgdon: mattaponiguy@gmail.com,
(301)537-0290.



Mentors and Problem Solution

Want to learn a new skill? AWG has many member-mentors to help you. See the list below to contact one.

Have a vexing woodworking problem? There may be many other members with the same situation. AWG has a “problem box” where you can anonymously place your problem or question for discussion and possible solutions at the next meeting. You will find the box at a table near the meeting hall entrance door (when we are back in session at the church). Until then send your problems to the editor, President, or other AWG officer.

AWG Member Mentors

Last Name	First Name	Phone	E-mail	Mentor Subject
Ames	Don	410-268-0509	dfames@verizon.net	Use and maintenance of Edge Tools (planes, chisels, scrapers)
Applegate	Patrick	410-426-8287	patrick__applegate@comcast.net	Finishing with Shellac (brushed and padded)
Arndt	Michael	410-960-3239	MarylandWoodPro@gmail.com	General wood finishing and finish restoration/repair
Ashby	Bob	410-969-2910	toolsrus58@comcast.net	Shapers, router tables and tooling for same
Borland	Andy	410-647-1242	AHBorland@aol.com	Box making
Chavez	Harry	410-863-5940	harry.chavez@gmail.com	Intarsia
Dodson	Paul	410-760-5382	pdwoodcrafts@verizon.net	Scroll saws and scrolling
Harvey	Dennis	240-463-4641	denharv@aol.com	Pen making
Hirrlinger	Jack	410-798-1339	tjhirr@verizon.net	Toys, tricks and puzzles
Luck	Jim	410-647-6622	jfl639@verizon.net	Inlay and shaker boxes
McDonald	Chris	410-326-1685	cmcdonald@thewavaz.com	Cabinets

Administration

AWG OFFICERS (June 2021 —May 2022 Term)

President – Bill Schneck	Endowment Coordinator – Bill Carbin
1st Vice President – Ken Davis	Entertainment Coordinator – Paul Dodson
2nd Vice President – Bruce Mitchell	Show Coordinator– Open
Secretary – Jim Menefee	Show & Tell Coordinator – Bill Carbin
Treasurer – Vince Antonioli	Special Projects Coordinator – Open
Tour Coordinator – Open	Membership Chairperson – Tom Dettweiler
Program Chairperson – Chris Desautels and Phil Christenson	Librarian—Lloyd Gleason
Newsletter Editor – Carl Wick	Charity Coordinator—Andy Borland
Historian - Jim Francis	Webmaster— Tyler Quevedo
	Education Chair—Rick Hodgdon

MEMBERSHIP and MEETINGS

Membership is open to all interested Woodworkers.

Annual Dues: New Members Joining between Jan and June: \$50; joining between July and Sept \$25; Free between Oct and Jan, but be sure to “re-up” the following year! For current members 2020 dues roll over into 2021!

General Membership Meetings:

2nd Thursday of each month 7 PM

Virtual Video Meetings UFN

Executive Board Meetings:

4th Thursday of the Month at 7 PM

By phone/video UFN

contact a board member for invitation

All are welcome at board meetings

CONTACT INFORMATION

Correspondence:

Annapolis Woodworkers Guild

P.O. Box 6001

Annapolis, MD 21401

Website:

Annapoliswoodworkers.org

The following vendors support AWG



Wurth Wood Group, 6660 Santa Barbara Road, Elkridge, MD 21075

410-796-7600 WWW.Wurthwoodgroup.com



Hartville Tools, Hartville, OH

800-345-2396 WWW.Hartvilletool.com



Exotic Lumber Company, 1610 Whitehall Road, Annapolis, MD 21409

410-349-1705 WWW.Exoticlumber.com



Somerset Door and Column Company, 174 Sagamore Street, Somerset, PA 15501

800-242-7916 WWW.Doorandcolumn.com

The following vendors support AWG



Brusso Hardware LLC, 67-69 Greylock Avenue, Belleville, NJ 07109

212-337-8510 WWW.Brusso.com



Klingspor 2555 Tate Boulevard Southeast, Hickory, NC 28603

800-645-5555 WWW.Klingspor.com



American Woodcrafters Supply 212 East Main, Box G, Riceville, IA 50466

800-995-4032 WWW.Americanwoodcrafterssupply.com



Lake Erie Toolworks 1234 Irwin Drive, Erie, PA 16505

815-528-4337 WWW.LakeErieToolworks.com/Pages/Club

10% Online Discount Code: **AWG10**